

INTERLOOM™ CONTENT MANAGEMENT TOOLS

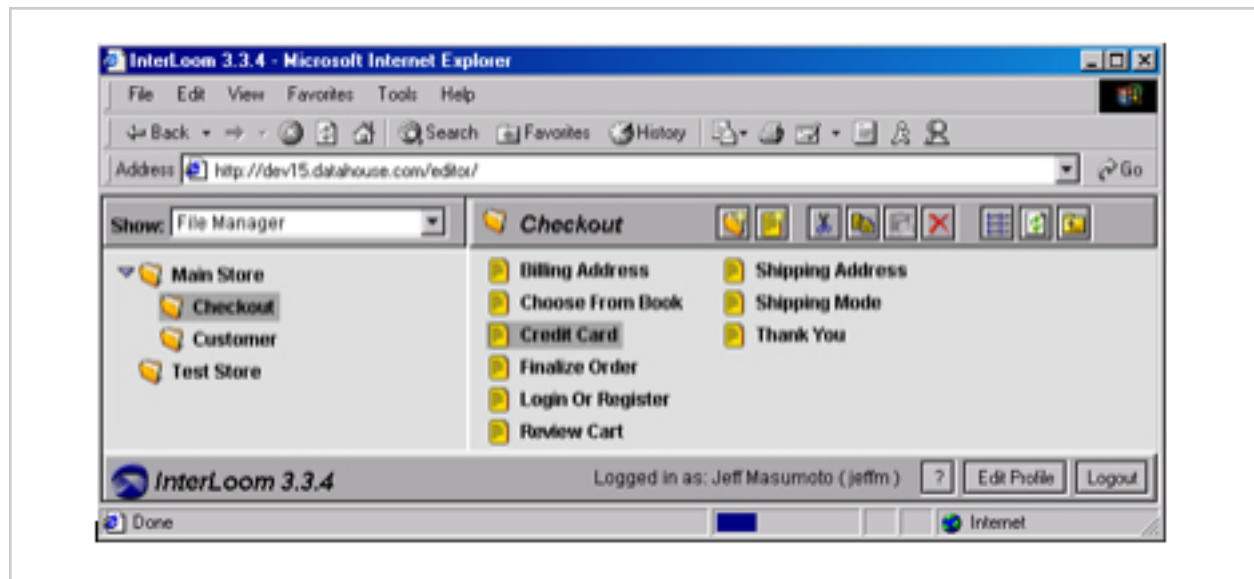
InterLoom™ enables organizations to securely and quickly control change. While developing InterLoom, DataHouse recognized the fluid business models of its customers and designed InterLoom™ to help them thrive in that challenging environment. DataHouse identified four key areas of Content Management that are critical to a successful e-business system.

APPLICATION USER INTERFACE

The InterLoom™ Editor – InterLoom™ Editor is a browser-based content management solution deployed over existing Internet infrastructures. To access the system, only an Internet connection and Web browser are needed. This makes it easy to deploy InterLoom throughout the organization and reduces the need to manage client software. All users - designers, content managers, editors and authors - access InterLoom™ using a Web browser. This allows authors and editors to use the tools they already have on their desktops and allows staff to work remotely.

InterLoom™ Editor has a user-friendly interface with word-processor like tools. It allows content authors and editors to work without knowing HTML (site designers need to know HTML), reducing the learning curve, training costs and reliance on IT staff. WYSIWYG (What-You-See-Is-What-You-Get) tools give authors and editors a preview of content and layout.

The InterLoom™ Editor utilizes a file directory analogy to virtually represent the database-driven content management system. A two-paneled window displays the virtual folder structure on the left and the folder contents on the right.



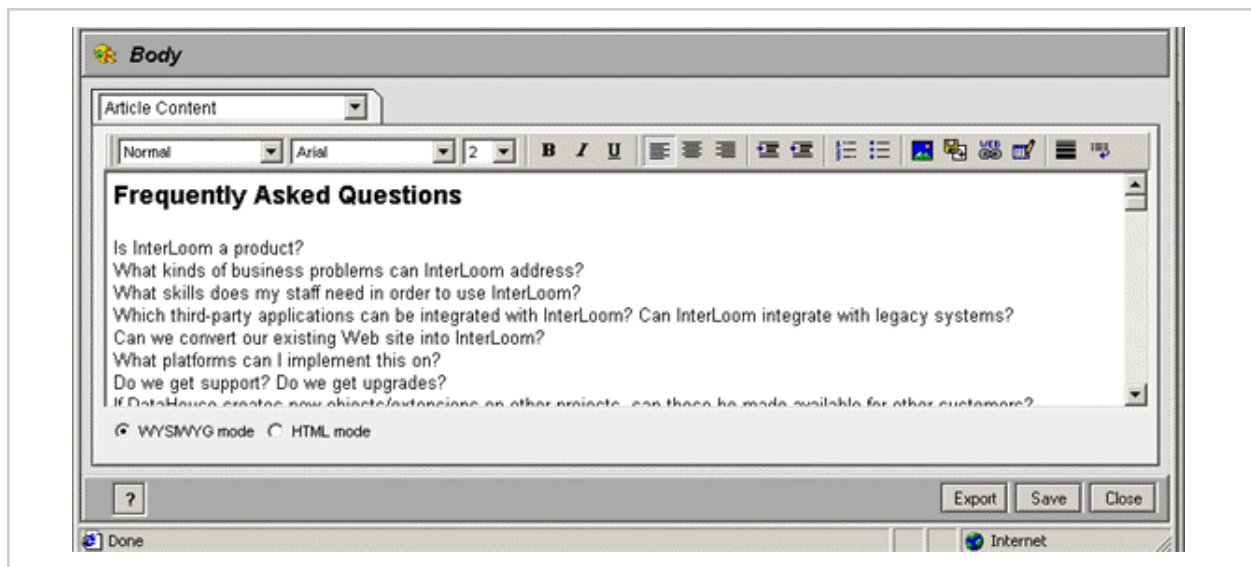
Editors and Developers can use normal WYSIWYG features such as drag-and-drop, cut, copy, and paste. Icons indicate specific functions while right-click contextual menus can also be used for object specific functions.



InterLoom™ Managers – The wide variety of InterLoom™ Editor functions is organized around a collection of managers. User security level determines access to the various managers. A pull-down menu navigates the user to the indicated manager.

The InterLoom™ Manager interface controls the following assets: **Files, Templates, Objects, Resources, Beans, Scripts, Filters, Workflow, and Users**. Administrative functions are controlled from the **System Manager**. Additional managers organize functions for the InterLoom™ extensions.

Article Object – This is the primary InterLoom™ object for creating and editing textual content. The Article Object offers WYSIWYG text editing functions such as bulleting, creation of tables, insertion of page breaks, and font control. In Core InterLoom, the Web Development Framework defines over twenty objects to be used in templates and pages to create the Web site. In addition to creating textual content, the Article Object contains a variety of WYSIWYG functions for tasks such as creating hyperlinks, inserting images, and linking to external file types such as PDFs and MS Office files.



CHANGE CONTROL

InterLoom™ File Manager - Organizes Web documents in a virtual folder structure. Filters, workflow and security can be applied to documents and folders from the File Manager. Non-technical business users control changes in content and functionality with features such as:

- **Dynamic Content** - InterLoom™ can dynamically generate content from enterprise resources for presentation, interaction or transaction via the Web. Content publishing can also be automated and scheduled.
- **Dynamic Linking** - Hyperlinks between documents can be dynamically generated just by their location and relationship in the virtual file directory. Pages can be easily moved within the Web application without creating broken links.
- **Scheduled Publishing** - Content can be published at a pre-assigned time schedule.
- **Random Publishing** - Content can be randomized to generate the appearance of unique content when users revisit the site.

InterLoom™ Resource Manager - Raw files such as GIF, JPEG, PDF, and video files are stored and organized in this manager. Objects point to the Resource Manager to specify the resource they need to create an object. Business users can control changes in system-wide content by accessing a single resource in this repository.

- **Distributed Authorship** - As a Web-based solution, InterLoom gives knowledge workers more capability to create and edit content. Giving non-technical staff more direct input into design and content development reduces their reliance on technical staff.

ROBUST SECURITY

InterLoom™ User Manager - InterLoom™ implements LDAP authentication with the InterLoom™ User Manager. Web site administrators create users and groups who may access the InterLoom™ Editor. User level is specified in this manager. E-mail addresses are also assigned for workflow and deployment notification. The levels of users and their access to managers are indicated below:

Role/Access Matrix										
Role/Function	File Mgr.	Resource Mgr.	Object Mgr.	Bean Mgr.	Filter Mgr.	Script Mgr.	Template Mgr.	Workflow Mgr.	User Mgr.	Folder/Doc Access
Web Only										
Restricted Access										
Basic Editor	X									
Content Editor	X									
Full Editor	X	X	X	X	X	X				
Template Designer	X	X	X	X	X	X	X			
Basic Admin	X	X	X	X	X	X	X	X		X
Administrator	X	X	X	X	X	X	X	X	X	X

As seen in the matrix above, the InterLoom User Manager assigns roles to users who are given access rights to certain InterLoom managers. Besides the seven user levels of security, folder and document level security can be assigned for granular control.

FLEXIBLE WORKFLOW

InterLoom™ Workflow Manager – Web site administrators define the workflow structure from this manager. The Workflow Manager specifies the users/groups involved in the workflow process and how they are to check in/out documents and how they should be notified for approval. A type of workflow is then assigned to specific folders or documents in the File Manager.

- **Serial Workflow Approval** - The assigned folder or document must be approved in a pre-determined order of users before publishing. Ideal for strict approval procedures.
- **Parallel Workflow Approval** - The users specified to the workflow of an assigned folder or document can approve/reject at anytime or in any order. Ideal for timely publishing.
- **Version Control** - The InterLoom Workflow Manager's built in check in/out procedures ensure that correct versioning protocols are enforced. System wide Version Control can be enabled without enforcing Workflow.

InterLoom™ provides tools via a standard Web browser for content authors and editors to create, update and manage Web site content. These development, content management and administrative tools are organized within a framework of managers for each type of asset.