

INTERLOOM™ SERVER

OVERVIEW

As a vital component of the DataHouse end-to-end e-business process, InterLoom™ Server is designed to go the last mile to deliver the e-business system to the Web. The Server component of the InterLoom system also encompasses the administrative controls for InterLoom.

InterLoom™ was developed to be the development, testing, staging and production environment for the e-business system. To fulfill the requirements of each environment InterLoom Server handles clustering, backup, restore, and caching.

DELIVERY MECHANISM

Simply put, the InterLoom Server fulfills a request to deliver a Web page. In doing so it processes the elements that make up the page according to the Object Model. The Object Model is the core of the InterLoom™ system. The object model is a representation of the Web page using object-oriented elements consisting of templates, objects and resources.

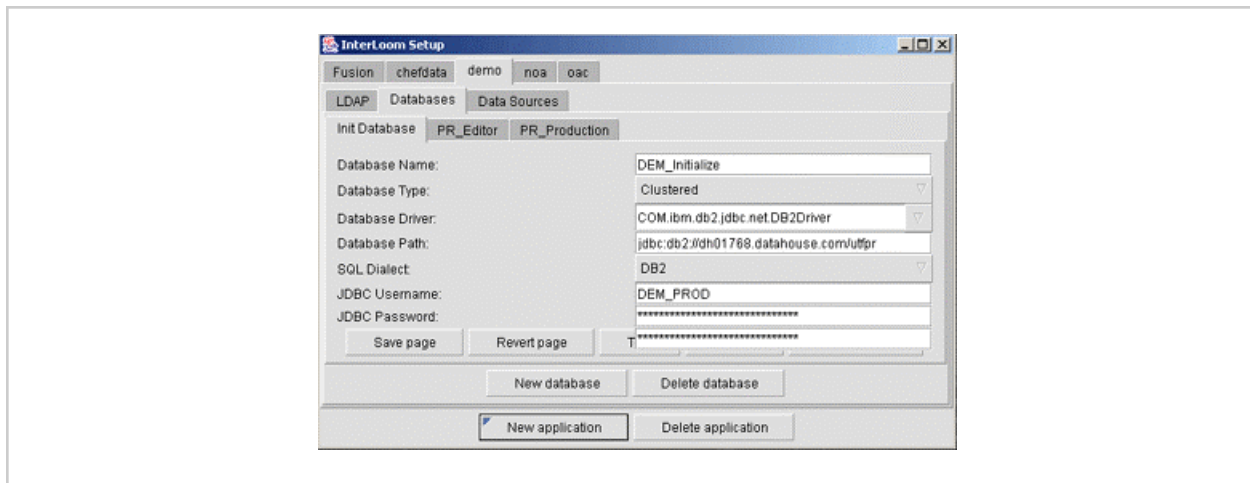
First, the Object Model processes the request. The object model then decomposes the request to access the repositories where the information is stored. The repositories consist of:

- The Structure Repository, which contains a definition of the template and objects that define the structure of the Web page.
- The Content Repository contains the text and data that populate the structures on the Web page.
- The Resource Library contains images and other files, which appear directly on the page.
- The Custom Repository contains any custom functionality developed for the system.

Once the structure and content of the Web page have been retrieved, key structure and content elements are maintained in a cache to improve performance. The InterLoom™ Page Server then formats the structure and content elements of the Web page for display.

INTERLOOM™ SET UP

A key feature of administering InterLoom Server is the Setup application. From this application, an administrator can coordinate the server components of their infrastructure to create an instantiation of InterLoom Server. Drivers, paths, schemas, and passwords to the LDAP and database servers can be controlled from a single interface.



INTERLOOM™ SYSTEM MANAGER

The System Manager is part of the InterLoom Editor and is accessible only by the highest user security level. The System Manager puts administrative control into a Web-browser based interface. This enables remote management of the e-business system. The System Manager is the administrative interface to InterLoom™ where administrators can control:

- Caching
- Connection pooling
- Data import/export
- Full text indexing for search functions
- Deployment of the system to production
- Page settings for home page and error pages
- Scheduling of deploy, caching and indexing tasks
- Archiving